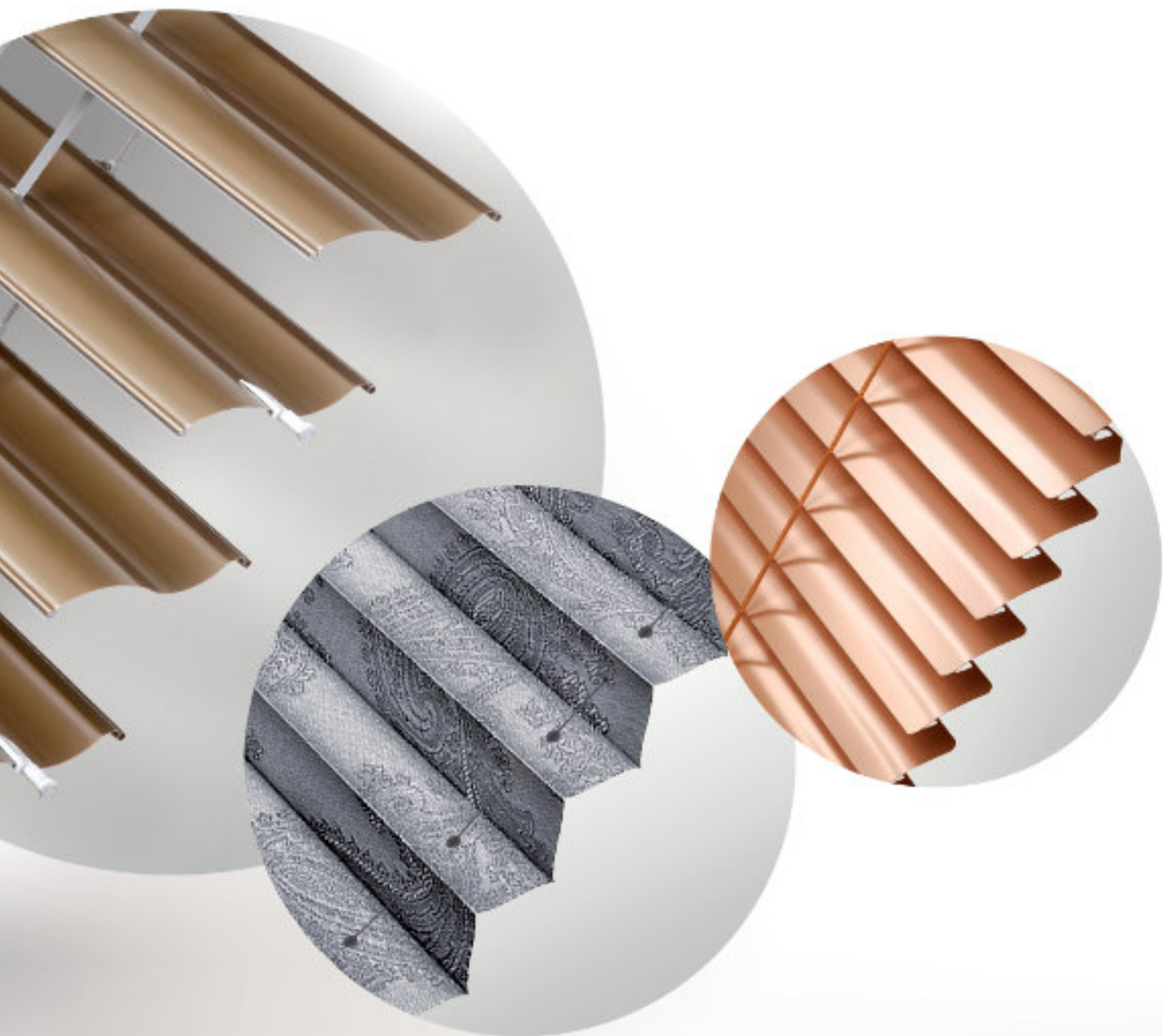




# SUN PROTECTION SYSTEMS



*... protect your privacy.*



# SUN PROTECTION SYSTEMS

... protect your privacy.

## FOUNDATION AND DEVELOPMENT OF ISOTRA

### 1. INTERIOR SHADING

Horizontal blinds

Vertical blinds, Japanese panel blinds, Plisse

Fabric roller blinds

Skylight shading systems

### 2. EXTERIOR SHADING

Exterior blinds

Purenit box and insulation jamb

Exterior roller blinds

Screen blinds

Shading for winter gardens and pergolas

Awnings

Pergola ARTOSI

CARPORT ARTOSI














ARTOSI GLASS

ARTOSI SLIDE PANELS

Insect screens

### 3. TECHNOLOGIES

#### LEGEND

 Cord	 Button	 Switch	 Tahoma
 Cord/Rod	 Handle	 Remote control	
 Ball-chain	 Plastic handle	 Strap	
 Handle	 Sun/wind sensor	 Control bar	

## ISOTRA *Quality*

A brand symbolizing years of tradition, innumerable investments into research and development, use of high-quality materials, technological advancement, reliable work of hundreds of employees and many more parameters, which together form one whole - the final product of the company ISOTRA.

# ABOUT US

## HISTORY

In 1992, two brothers-in-law, Bohumír Blachut and Erich Stavař, decided to set up their own business in their home village of Bolatice near Opava. They started in a garage, establishing a company they named ISOTRA. ISO came from the word for insulation and TRA from trade, as they were originally involved in the trade and installation of window sealing. Much has changed since then, but the company's identity remains

the same. In 1993, they started dealing in the current product line – window blinds. Always seeking to improve their products, and reacting to the current market demand, they decided, in 1995, to start production of their own blinds and components, with continuous expansion of the shading product line.

## DIRECTION OF DEVELOPMENT

What sets ISOTRA apart from its competition is primarily the fact that the company is able to develop a completely new, customised product from A to Z. This comprises designing, manufacture of the individual components, testing and certification of the new product, setting up the technological processes, developing new machinery, and supplying

the complete technology. The company holds patents for a number of things, at high standards of excellence. The technologies, production processes, as well as research and development in solar shading make ISOTRA one of the leading producers of sun-shading products and a technological leader not only in the Czech Republic.

## MANUFACTURING PROGRAMME

ISOTRA has its own R&D department, a design office, technologies, a state-of-the-art tool shop, a new powder coating shop, a press shop for thermoplastic materials, and extensive production facilities. The company offers a comprehensive product range, including the product groups of interior and exterior blinds, fabric roller blinds, pleated blinds, Japanese walls, exterior roller blinds, insect screens, awnings, screen roller blinds,

verandas, and ARTOSI bioclimatic pergolas. The production of components, profiling machines, cutting tools, and technological units for the manufacture of the blinds is an inseparable part of the manufacturing programme. Technological maturity of the company is documented by the possession of several worldwide patents and utility models for the technical solutions in the area of shading technology.

## ISOTRA QUALITY

Quality, reliability, customer care, research, development, technologies and innovations with respect to energy savings – these are ISOTRA's fundamental values. The company pursues the objective of providing the customers with branded, clearly identifiable, technologically advanced

products of corresponding quality. ISOTRA a. s. holds the certificates of quality in accordance with the Czech standards ČSN EN ISO 9001-2009 and ČSN EN ISO 14001:2005, employs more than 600 employees, and exports its product to more than 46 countries worldwide.

## 30 YEARS WITH YOU

More than 32 years of ISOTRA on both the domestic and international markets is proof of constant growth, innovations, reliability, expertise, and tradition. ISOTRA has remained a solely Czech company that keeps expanding. The establishment of subsidiaries in Germany and Poland is indisputable evidence of this fact. The brand is currently being reinforced

by expanding the Partner network in the Czech Republic, Slovakia, as well as further abroad. The red background of the ISOTRA logo depicts the dynamics with which ISOTRA has been evolving over the last 30 years.



# INTERIOR SHADINGS

*... protect your privacy.*



# HORIZONTAL BLINDS

Horizontal blinds are the most common type of shading applications used. All blinds in this category are made from aluminium. Respective blind types differ in slats, method of installation, control or top rail design. We offer horizontal blinds in a wide range of colours as well as imitations of wood to fit your interior.

## FEATURES AND ADVANTAGES OF HORIZONTAL BLINDS

- Variable control options,
- various head rail shapes,
- option of blinds with or without covering rail,
- low control force,
- easy installation and maintenance,
- wide selection of slat colours from classical to wood imitation.

Types of horizontal blinds	Min. width (mm)	Max. width (mm)	Max. height (mm)	Max. guaranteed area (m <sup>2</sup> )
Horizontal blinds with 25 slats	300, 400*	2 000	2 200	2,5; 4,4**
Interior blinds Cetta 35/50 Economy	400	3 150	3 000	6,0
Interior blinds Cetta 35 (ball-chain)	400	3 500	3 000	6,0
Interior blinds Cetta 35 (wheel)	400	3 500	3 000	8,0
Interior blinds Cetta 35 (motor)	600	3 500	3 000	10,0

\* System 25 wheel, System 25 motor, Isolite motor, Isolite plus motor, Neoisolite, Energy

\*\* System 25 motor, System 25 Large, Isolite, Isolite plus



### ISOTRA SYSTEM HIT

- Optimal quality-price ratio,
- simple design of top rail,
- low control force.



### ISOTRA SYSTEM HIT II.

- Minimum light passing between first slat and head rail,
- higher rigidity of head rail,
- low control force,
- optional surface finish with renolite in wood imitation.



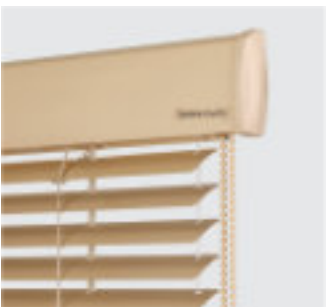
### ISOTRA SYSTEM CLASSIC.

- Rails from extruded aluminium,
- atypical design for inclined and broken windows.



### ISOTRA ENERGY

- Wireless controlled blind driven by solar power,
- zero electricity consumption,
- fully automated wireless control.



### NEOISOLITE

- Installation using side brackets,
- easy lifting of blinds to facilitate window cleaning,
- rails from extruded aluminium,
- optional surface finish with renolite.



### ISOLITE PLUS

- Elegant design,
- rails from extruded aluminium,
- atypical design for inclined and broken windows,
- optional surface finish with renolite.



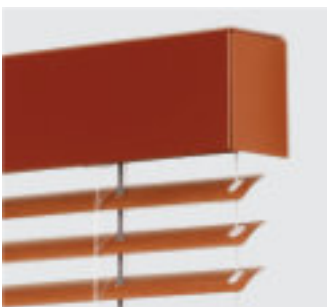
### CETTA 35, 50 - ECONOMY

- Economical model,
- dual slat width: 35 mm and 50 mm,
- simple cord control with brake,
- dual-sided tilting of slats,
- option of cord guide or freely hanging blinds.



### SYSTEM 25

- Option of blinds with or without covering rail,
- variable control system,
- atypical design for inclined and broken windows,
- optional surface finish with renolite.



### CETTA 35

- Optional surface finish with renolite in wood imitation,
- optional electrical control,
- guaranteed area up to 10 m<sup>2</sup>.





# VERTICAL BLINDS, JAPANESE PANEL BLINDS, PLISSE

Be unconventional and select an original alternative to interior sunshades and blinds. Pleated textile plisse blinds, vertical blinds or Japanese panel blinds will make your interior cosy, supplement it with a modern and elegant element, and in addition they will protect you against harsh sunlight and an undesirable appearance.

Plisse blinds provide shading also in very atypical windows. They are also used in places where other types of shading can't be installed. Japanese panel blinds and vertical blinds may be used in places which require shading of large areas or optical separation of large living areas.

For the shading of rooms we use fabrics with an excellent darkening effect, or non-inflammable materials in office premises, and allergy sufferers appreciate the materials made of glass fibres.

## FEATURES AND ADVANTAGES OF VERTICAL BLINDS, JAPANESE PANEL BLINDS AND PLISSE

- Elegant and decorative element for shading of a modern interior,
- wide choice of fabrics of various colours, decors and materials,
- atypical design (plisse, vertical blinds),
- daylight intensity regulation.

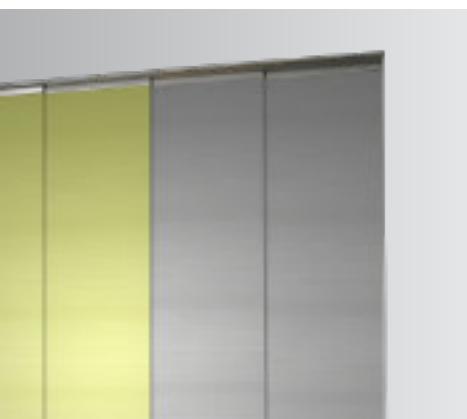


#### VERTICAL BLINDS

- Ideal solution for dividing rooms or shading large areas.
- selection of atypical shapes.
- wide range of slats and fabrics.



Min. width (mm)	Max. width (mm)	Max. height (mm)	Max. guaranteed area (m <sup>2</sup> )
300	5 950	5 000	20



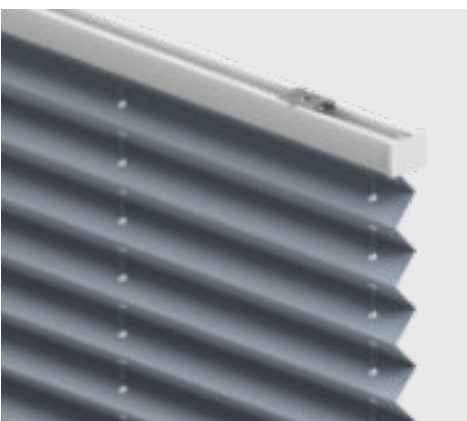
#### JAPANESE PANEL BLINDS

- Decorative and highly elegant shading component,
- original design for comprehensive shading regardless of the number of windows or wings,
- rails from extruded aluminium in white or silver colour,
- wide range of fabrics of various colours and designs,



Min. width (mm)	Max. width (mm)	Max. height (mm)	Max. guaranteed area (m <sup>2</sup> )
1 000	5 800	3 200	12,5

Note: For a height over 2700 mm it is necessary to consult the choice of fabric with the manufacturer; the maximum size of individual panels is given by the dimensional limit of individual types of fabrics; determination of the width of individual panels depends on the type of the carrying element, or the number of required panels and the total width of the installation.



#### PLISSE

- An elegant element of the modern interior,
- a wide choice of plisse materials, colours, decors,
- the option to combine two fabrics,
- fabrics with various degrees of light transmittance,
- honeycomb fabrics.



Min. width (mm)	Max. width (mm)	Min. height (mm)	Max. height (mm)
120	2 300	300	2 600

Note: the values specified in the table are limit values and differ by the type of plisse.



# FABRIC ROLLER BLINDS

Create a pleasant environment, day or night. Interior roller blinds will protect your at night from streetlamp light, and from sunlight in the day. Choose from a wide range of options, classical roller blinds, roller blinds with side guide rails or timeless day-night design with infinite fabric ...

Whether you choose fully darkening fabric or partly transparent fabric, you will always get an elegant and fully functional interior component which shall enhance your interior.

## FEATURES AND ADVANTAGES OF FABRIC ROLLER BLINDS

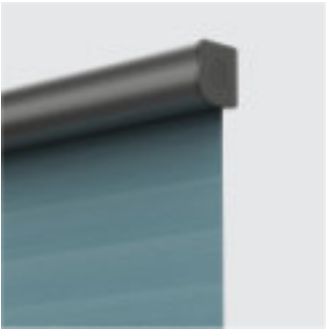
- Variable design and various installation options,
- aluminium and plastic rails prevent passing of light through the sides,
- chain control,
- day-night fabric option.

Type	Version	Min. width (mm)	Max. width (mm)	Max. height (mm)	Max. guaranteed area (m <sup>2</sup> )
LARRA ECO, LARRA	classic fabric*	300/600	2 200	4 600 (3 500)	-
	fabric day-night**	300/600	2 200	4 600 (2 300)	-
LARRA SCREEN ECO, LARRA SCREEN	fabric screen	300	2 200	2 600	-
VERRA (50)	classic fabric*	300/700	3 500	5 500 (5 200)	17,5 (9)
	fabric day-night**	300/700	2 800 (2 750)	5 500 (2 650)	15,4 (5,4)
VERRA METAL (50)	classic fabric*	300/700	3 500	5 500 (5 200)	17,5 (9)
	fabric day-night**	300/700	2 800 (2 750)	5 500 (2 650)	15,4 (5,4)
VERRA SEMI	classic fabric*	300/500	2 000	5 000 (3 600)	6 (3)
	fabric day-night**	300/500	2 000	5 000 (1 700)	8,6 (3,4)
ROLLITE	classic fabric*	300/ -	1 400	1 700	1,5
LUNA		300/ -	1 400	1 700	1,5
NEMO		300/ -	1 400	1 700	1,5
SCREEN HR8-ZIP INTERIOR BO	box 110	400/795	3 900	3 500	13

\* The dimensions in the table are valid for the lightest fabric weighing up to 170 g/m<sup>2</sup> and the thickness up to 0,3 mm. The dimension in the brackets are valid for the heaviest fabric weighing more than 365 g/m<sup>2</sup>.

\*\* The dimensions in the table are valid for the lightest fabric Parga 70 g/m<sup>2</sup>. The dimension in the brackets are valid for the heaviest fabric Cyprus 167 g/m<sup>2</sup>.

Limited dimensions differ according to concrete type of fabric.



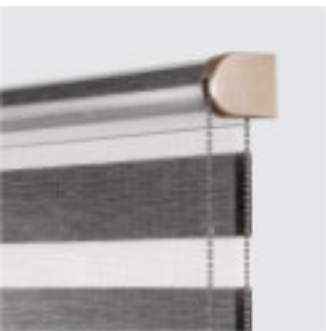
**LARRA ECO, LARRA, LARRA SCREEN ECO, LARRA SCREEN**

- Modern and design element of interior,
- wide range of fabrics including day-night ones (does not apply for Larra SCREEN),
- variability of design (3 types of cover boxes, only brackets or mounting brackets),
- possibility of manual or engine control,
- choice of placing more roller blinds in one box.



**VERRA** - roller blind without covering rail

- Classical roller blind with simple design,
- easy handling and installation,
- version with classic fabric or fabric type day-night.



**VERRA METAL** - roller blind without covering rail in full metal construction

- Easy handling and installation,
- version with classic fabric, fabric type day-night or fabric type screen,
- recommended form shading of large areas.



**VERRA SEMI** - roller blind with covering rail

- Supporting and control elements do not interfere with the interior design,
- wide range of colours of the fabrics,
- version with a classic fabric or with a day-night fabric,
- easy installation and handling.



**ROLLITE** - roller blind with covering rail and guide channels

- Roller blind with aluminium covering rail,
- aluminium or plastic guide channels preventing passing of sunlight through sides,
- wide range of fabric colours,
- rails in six RAL colours.



**LUNA** - roller blind with covering rail and guide channels classical / day-night

- Roller blind with aluminium or plastic covering rail,
- side guide rails preventing passing of sunlight through sides.



**NEMO** - roller blind without covering rail classical / day-night

- Roller blind on side brackets without covering rail,
- simple design and white components,
- easy chain control,
- installation on side brackets or suspension onto window wings (without drilling).



**SCREEN HR8-ZIP INTERIOR BO**

- Fabric stays stretched longer thanks to the innovative metal spring zip system,
- option of 2 types of box design: classic square or modern rounded,
- easy assembly,
- shading roller blinds,
- possibility to use both interior and screen blackout fabrics designed for interior use.



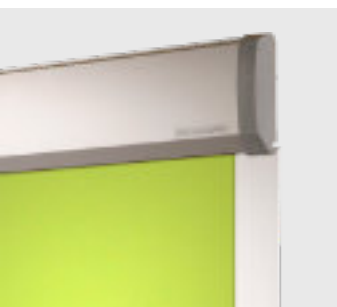


# SKYLIGHT SHADING SYSTEMS

It makes no difference if you choose blinds or roller blinds for skylights – both types of shading will provide protection against sunlight and prevent overheating of your interior. Skylight roller blinds and blinds are suitable for all types of windows and guarantee perfect shading due to aluminium guide rails on the sides. Stepless control of light, full or partial shading, elegant design.

## FEATURES AND ADVANTAGES OF ROOF SYSTEMS

- Perfect shading of interior,
- for all types of skylights,
- aluminium guide rails prevent passing of light through sides,
- easy control using rods for less accessible windows.



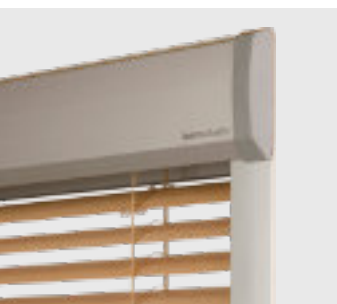
### R-LITE ROLLER BLIND

- Fabric roller blinds suitable for all types of skylights,
- rails from anodized aluminium or in white color,
- aluminium guide rails prevent passing of light through sides,
- wide range of fabrics,
- easy control using rods for less accessible windows.



Min. width (mm)	Max. width (mm)	Max. height (mm)	Max. guaranteed area (m <sup>2</sup> )
300	1 200	1 200* / 1 450	1,7

\* max. height of Blackout fabric



### V-LITE BLIND

- Horizontal blinds suitable for all types of skylights,
- rails from anodized aluminium or in white color,
- two methods of slat tilting – runner or wheel,
- aluminium guide rails prevent passing of light through sides,
- easy control using rods for less accessible windows.



Min. width (mm)	Max. width (mm)	Max. height (mm)	Max. guaranteed area (m <sup>2</sup> )
300	1 200	1 600	1,5



# EXTERIOR SHADING

*... protect your privacy.*



# EXTERIOR BLINDS

Exterior blinds protect your interior against adverse weather and create an optimal environment in terms of light and thermal conditions. They help cut costs of air conditioning and create a pleasant interior climate. The special slat shape in the Zetta range provides for excellent darkening and a high thermoregulation effect. The Setta slats are highly elegant and Cetta blinds in various options represent classical outdoor shading products.

Exterior blinds are a significant part of a building in terms of energy savings. In the traditional sense exterior blinds provide a shading and safety function, while in the non-traditional sense they are an integral architectural element of office buildings and jewel in family houses.

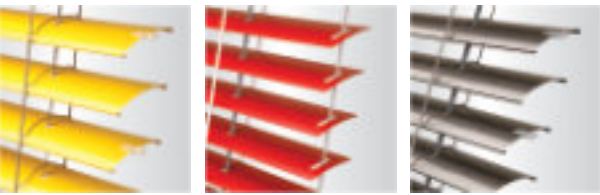
## FEATURES AND ADVANTAGES OF EXTERIOR BLINDS

- S, Z and C shaped slats, various widths,
- variable design: Duo system, Slim system, Flexi system,
- possible installation into window lintels,
- high shading level,
- thermoregulation and protective effect,
- reduction of outside noise levels,
- bottom rail from extruded aluminium,
- optional electrical control,
- reduced blind noise (pressed rubber),
- maximum guaranteed area 24 m<sup>2</sup>.

Type	Max. and min. width (mm)		Max. height (mm)	Max. guaranteed area (m <sup>2</sup> )			Guide
	min.	max.		max.	cord	handle	
Cetta 50	400/600*	3 500	3 000	6	8	10	wire/channel
Cetta 60 Flexi	600	4 000	4 000	-	8	16	wire/channel
Cetta 65	600	6 000	4 000	-	8	24	wire/channel
Cetta 80 Cetta 80 - Slim	600	6 000	4 000	-	8	24	wire/channel
Cetta 80F TE	600	2 500	4 000	-	-	7	wire
Cetta 80 Flexi	600	4000	4 000	-	8	16	wire/channel
Cetta 100 Flexi	600	4000	4 000	-	8	16	wire/channel
Setta 65	600	6000	4 000	-	8	24	wire/channel
Setta 90	600	6 000	4 000	-	8	24	wire/channel
Zetta 70				-	8	24	wire/channel
Zetta 90				-	8	18	wire/channel
Titan	600	2 800	4 000	-	-	8	channel
Corner blind without motor	600	3 000	4 000	-	-	7,5	channel
Corner blind with motor	600	3 000	4 000	-	-	12	channel
Viva blind without insect screen	600	4 000	**	-	-	12	channel
Viva blind with insect screen	720	1 800	**	-	-	3	channel

\* Min. width for motor control

\*\* According to the type of slats for the given box size.



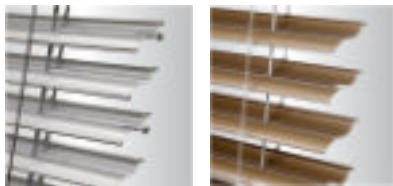
### CETTA 50, 65, 80

- Variable slat width: 50 mm, 65 mm, 80 mm,
- bottom rail from extruded aluminium,
- variable design:
  - Duo system – dual tilting of slats
  - Flexi system – reduced packet height of blind (slats 60, 80, 100 without curvatures)
  - Slim system – reduced packet height of blind (different method of slat stacking)
- maximum guaranteed area 24 m<sup>2</sup>.



### ZETTA 70, 90

- Creates a solid surface when closed,
- dual slat width: 70 mm and 90 mm,
- high level of shading,
- bottom rail from extruded aluminium,
- maximum guaranteed area 24 m<sup>2</sup>.



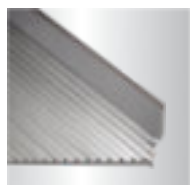
### SETTA 65, 90

- Elegant and design finish with S shaped slats,
- dual slat width: 65 mm and 90 mm,
- bottom rail from extruded aluminium,
- maximum guaranteed area 24 m<sup>2</sup>.



### TITAN 90

- High level of resistance to violent intrusion,
- self-supporting blind,
- blinds using independent system for lifting and tilting of slats,
- packet stopping in contact with any obstacle and the rest of the rolled blind remains in the obstacle position,
- maximum guaranteed area 8 m<sup>2</sup>.



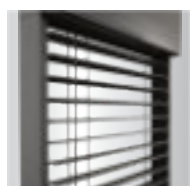
### INCLINED BLINDS CETTA 80F TE

- Solution for atypical window shapes,
- winding the slats diagonally up to the window frame,
- low height of the pack,
- a special mechanism that compensates for different lengths of textile strips when lowering and raising the blind.



### CORNER

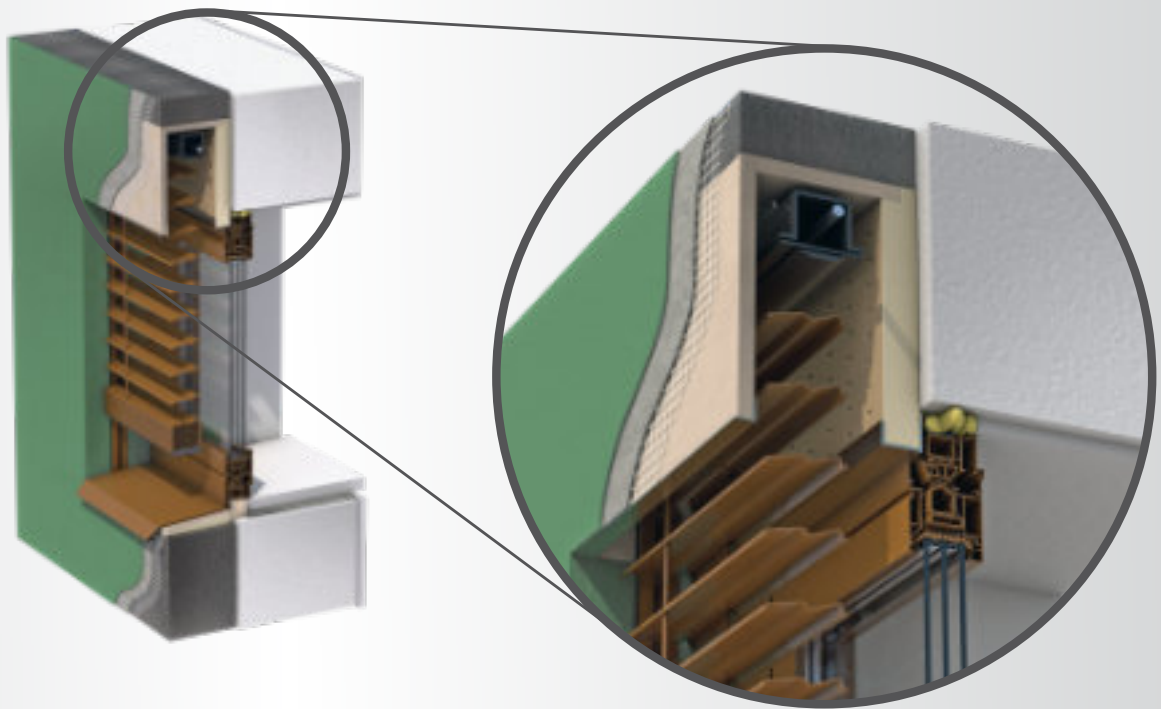
- Shading of large corner windows,
- without a central guide bar,
- undisturbed view of the landscape,
- one motor for both blinds,
- use for inner and outer corner,
- low height of the pack,
- choice of two types of slats.



### VIVA

- Faster and easier assembly,
- high level of shading,
- thermoregulatory and protective effect,
- decrease in the level of outside noise,
- lower profile from the extruded aluminium,
- electric control option,
- reduction of the noise from the blinds.





# PURENIT BOX AND INSULATION JAMB

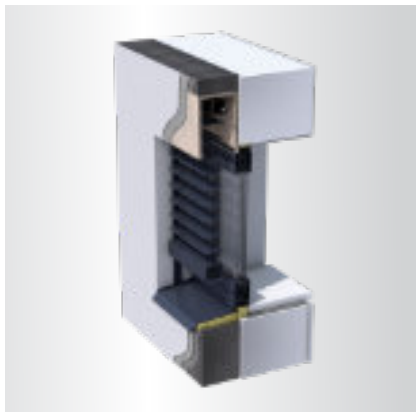
Thermo isolation box for external venetian blinds is well designed construction part which brings lots of useful features. These come especially from the PURENIT material characteristics which the boxes are produced from. Together with purenit or polystyrene insulation reveal, they provide an elegant and effective solution.

Insulation boxes are characterized by high resistance to many influences (pressure, temperature, humidity, etc.), they are strong and light. Purenit is characterized by minimal heat expansion and fire resistance is B2 according to DIN 4102-1. Boxes made of non-toxic recyclable material can be manufactured in various sizes and designs.

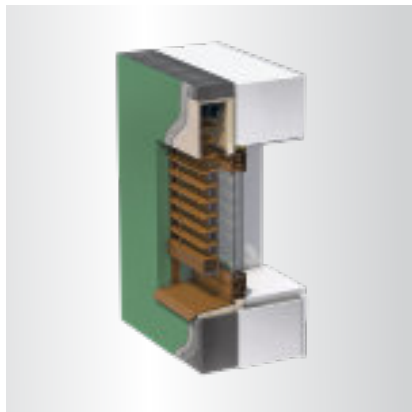
## BENEFITS AND ADVANTAGES

- High resistance.
- durable and light material.
- minimal temperature dilatation.
- fire resistance B2 according to DIN 4102-1.
- various dimensions and variations.

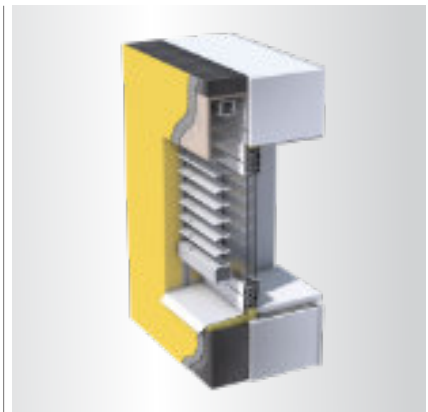
BOX TYPES



ISOTRA PB



ISOTRA PB-IS

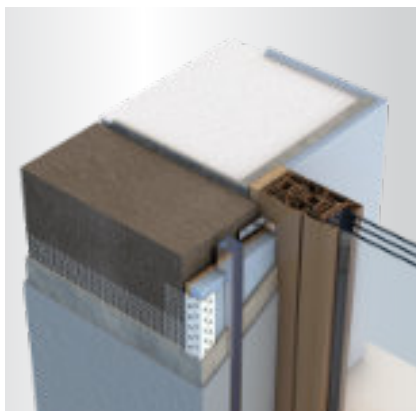


ISOTRA PB-L

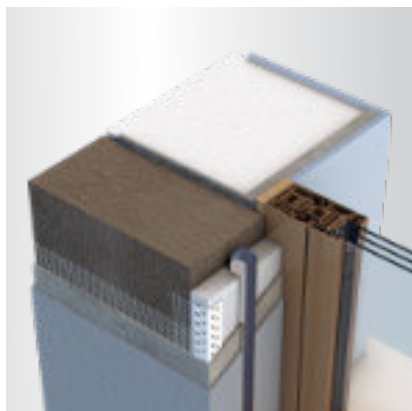
STANDARD DIMENSIONS (mm)								
Box type	Box length D (mm)		Dimension A (mm)		Dimension B (mm)		Dimension C (mm)	
	Min.	Max.	Min.	Max.	Min.	Max.	Min.	Max.
PB	450	6 000	150	600	140	300	150	600
PB-IS 20	450	6 000	150	600	145	300	150	600
PB-IS 30	450	6 000	150	600	155	300	150	600
PB-IS 40	450	6 000	150	600	165	300	150	600
PB-IS 50	450	6 000	150	600	175	300	150	600
PB-IS 60	450	6 000	150	600	185	300	150	600
PB-L	450	6 000	150	600	125	300	-	-

\* Boxes longer than 3500 mm are assembled from multiple pieces - see Box connection.

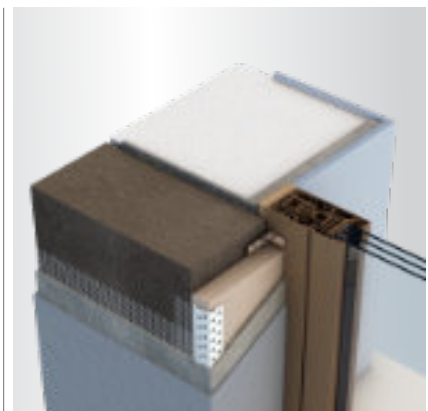
PURENIT REVEAL



PIO



SIO



PUR

STANDARD DIMENSIONS (mm)					
Dimension A		Dimension B		Dimension C	
Min.	Max.	Min.	Max.	Min.	Max.
150	3 200	75	306	65	235

\* This is the size of the PIO or SIO insulation reveal without the overhang of the 150 mm housing.



# EXTERIOR ROLLER BLINDS

If you need quality darkening, reduction of outdoor noise and increased protection of property, then an aluminium or plastic pre-window roller blind is the answer for you.

The Vivera aluminium exterior roller blinds form a solid surface when closed, which provides a hard to beat obstacle in case of theft and also serve as a substantial thermoregulation component. A practical accessory to the exterior roller blind can be a built-in insect screen which can be controlled independently of the roller blind control.

## FEATURES AND ADVANTAGES OF EXTERIOR ROLLER BLINDS

- Protection of privacy,
- efficient thermoregulation,
- reduction of outdoor noise,
- variable design – aluminium, plastic,
- optional installation into window lintel,
- optional built-in insect screen.

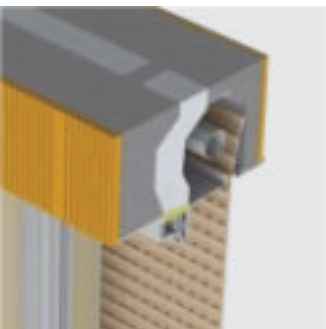


## VIVERA

- Roller blind suitable for integration under facade or thermal insulation system,
- roller blind suitable for additional installation onto window frame or facade,
- aluminium slats filled with PUR foam,
- optional integrated insect screen Vivera-Sectra,
- maximum guaranteed area 8 m<sup>2</sup>.



Type	Min. width (mm)	Max. width (mm)	Max. height (mm)	Max. guaranteed area (m <sup>2</sup> )
slat M328	450	2 700 / 1 800 (Sectra)	4 350 / 2 500 (Sectra)	5,8 / 3 (Sectra)
slat M317	450	2 900 / 1 800 (Sectra)	4 340 / 2 500 (Sectra)	6,5 / 3 (Sectra)
slat MY442	450	4 000 / 1 800 (Sectra)	2 860 / 2 500 (Sectra)	8,5 / 3 (Sectra)



## HELUZ LINTEL OUTSIDE ROLLER BLIND

- High degree of shading,
- elimination of thermal bridges,
- aluminium slats filled with PUR foam,
- maximum guaranteed area 8 m<sup>2</sup>.



Type	Min. width (mm)	Max. width (mm)	Max. height (mm)	Max. guaranteed area (m <sup>2</sup> )
slat M317	600	2 900	2 800	6,5
slat M328	600	2 700	2 800	5,8
slat MY442	600	4 000	2 300	8,5



## ROLOSA

- For new buildings or within any renovation of existing buildings,
- quick and easy installation,
- motor or wheel control,
- self-supporting,
- the end slat is made of extruded aluminium with a rotating stop,
- maximum guaranteed area 8,5 m<sup>2</sup>.



Controls	Width (mm)		Height (mm)	Area (m <sup>2</sup> )	Slat
	min.	max.	max.	max.	
Wheel	400	2 900	5 880	6,5	M317
Motor	720	2 900	5 880	6,5	
Solar motor	840	2 500	3 000	5,5	
Motor	720	4 000	4 370	8,5	MY442
Solar motor	840	2 500	3 000	5,5	



## SALVIS

- Self-supporting,
- suitable for both new buildings and renovations,
- motor or handle control,
- made of quality materials,
- simple installation,
- comfort and energy saving,
- heat and acoustic insulation,
- aesthetic design.



Controls	Width (mm)		Height (mm)	Area (m <sup>2</sup> )	Slat
	min.	max.	max.	max.	
Motor	740	2 900	5 880	6,5	M317
Solar motor	840	2 500	3 000	5,5	
Handle	400	2 900	5 880	6,5	
Motor	740	4 000	4 370	8,5	MY442
Solar motor	840	2 500	3 000	5,5	



# SCREEN BLINDS

Purchase highly efficient, aesthetic and modern screening technology – ISOTRA screen blinds.

The blinds will ensure a pleasant interior temperature and optimal light conditions for work as well as relaxation; in the summer, the blinds will reduce the cost of air conditioning, while in the winter they will reduce the flow of cold air to the window glazing, substantially enhancing the building's insulating properties.

The production technology of fabrics for these timeless shades ensures their high resistance to external influences such as wind or changes in temperature and humidity.

According to the type, you can select a blind with a cover moulding or a light-weight version without the cover moulding; both versions are available with side guidance by

a cable or by a guide rail. Screen blinds with a zip system lock the fabric in the lower position, which ensures that the fabric is fully tensioned.

## FEATURES AND ADVANTAGES OF SCREEN BLINDS

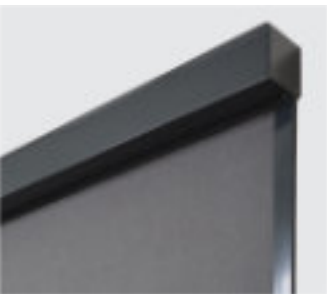
- Simple, stylish and modern appearance,
- wide selection of alternative fabrics for the interior and exterior,
- variable thermal and optical properties of the fabrics,
- maximum reduction of solar penetration,
- protection against insects and adverse external conditions,
- option of electric control.

Solution	Version	Min. width (mm)	Max. width (mm)	Min. height (mm)	Max. height (mm)
ALFA-ZIP*	motor	795	4 200	400	3 500
	handle	400	3 900	400	3 500
	solar system ISOTRA BASIC ***	795	4 200	400	3 500
	solar system SUNEА ***	595	3 200	400	3 500
ALFA PLUS-ZIP	motor	795	4 800	400	2 500
ZIP	handle	500	4 500	500	3 000
	motor	800	4 500	500	3 000
ZIP ECONOMY	motor	800	4 000	500	3 000
GW	handle	800	4 500	500	3 800
	motor	500	4 000	500	3 800
LITE	handle	500	4 000	500	3 800
	motor	800	4 500	500	4 000
SKY	handle	400	1 200	500	1 600
HR7*	handle	400	3 500	400	3 000
	motor	580	3 500	400	4 000
HR8-ZIP**	handle	400	3 000	400	5 000
	motor	665	6 000	400	5 000
	solar system	595	2 500	400	3 000
HR10-ZIP	motor	655	4 500	501	4 500

\* The values apply to the box size of 110 mm.

\*\* The values apply to the box size of 150 mm.

\*\*\* Square box only.



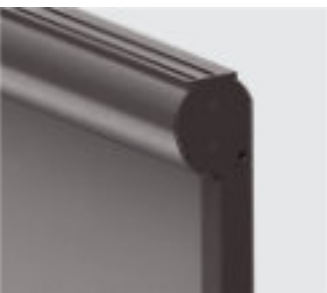
### SCREEN ALFA-ZIP

- 2 types of modern boxes: classic squared or modern rounded,
- special mounting profile for pergolas,
- wind resistance class 6 (max. 88 kph),
- a possibility of binding 3 roller blinds,
- a possibility of solar powering.



### SCREEN ALFA PLUS-ZIP

- 2 types of modern boxes: classic squared or modern rounded,
- special mounting profile for pergolas,
- wind resistance class 6,
- maximum width 4 800 mm.



### SCREEN ZIP

- Decorative and aesthetic element of the building exterior,
- minimal penetration of light thanks to absolute tension of the fabric,
- high resistance to wind,
- heat regulating effect,
- insect protection in closed position.



### SCREEN HR7

- Choice of 2 box modern designs: square for austere architecture or rounded for more traditional buildings, both types available in 3 sizes,
- weighted bottom lath to guide and tension the fabric,
- the possibility of coupling up to 3 pieces of screens,
- guaranteed area up to 14 m<sup>2</sup>.



### SCREEN ZIP ECONOMY

- Modern and stylish element of both the exterior and the interior of buildings,
- minimum light transmission thanks to the absolute fabric tension,
- high wind resistance,
- thermal regulation effect,
- insect protection when closed,
- cost-effective variant of the SCREEN ZIP model.



### SCREEN HR8-ZIP

- Perfect for passive construction: the building shell is not perforated,
- fabric remains taut longer thanks to an innovative zip system with metal spring,
- choice of 2 box designs: modern or classic, both types are available in 4 sizes,
- guaranteed area up to 18 m<sup>2</sup>.



### SCREEN GW

- Simple, modern and stylish appearance,
- side guidance by a cable or by a guide rail,
- screening of both the interior and the exterior areas,
- possibility of electric control,
- alternative material composition of fabrics,
- frame colour as per the RAL chart.



### SCREEN HR10-ZIP

- The box integrated in the cavity wall in the front of the window,
- no perforation of the building shell,
- fully integrated bottom lath in retracted position,
- ideal for passive construction and energy-neutral living,
- high wind resistance.



### SCREEN LITE

- Light-weight variant without the cover moulding,
- cost-effective alternative to the SCREEN ZIP and SCREEN GW models,
- screening of both the interior and the exterior areas,
- side guidance by a cable or by a guide rail,
- possibility of electric control.



### SCREEN SKY

- Effective protection from light and heat radiation,
- protection against weather and outside noise,
- full functionality in any position of the casement,
- wide selection of fabrics with various levels of light transmittance.





# SHADING FOR WINTER GARDENS AND PERGOLAS

For winter gardens or pergolas shading we offer ideal roller blinds Veranda which bring optimal comfort and climate in winter garden during the whole year. Verandas not only allow thermo-regulation but also sunlight regulation and therefore protect you against unbearable heat and interior against fading.

Roller blind Veranda is a combination of high quality material and modern design. It is suitable for mounting on whichever winter garden or pergola construction. Whole system is produced from corrosion resistant materials and the fabric is fully hidden in the box in closed state. In opened state the fabric is kept in sufficient distance from the glass thanks to guiding rails and spring system which keeps the fabric in constant tension.

## FEATURES AND ADVANTAGES

- Shades inside and outside glass surfaces - horizontal, vertical and sloped
- Elegant and timeless design
- Creates optimal thermo regulation
- Countless options
- Stretched fabric due to unique Zip system
- 2 mounting options: from interior or exterior



### VERANDA HRV52



- Shades large spaces of winter garden or pergola,
- thermo regulation and protection effect,
- possibility to connect up to 4 pcs (do not have common box),
- box is produced from extruded aluminum profiles.

Version	Width (mm)		Height (mm)	Guaranteed area (m <sup>2</sup> )
	min.	max.	max.	max.
motor	1 500	5 500	6 000	25



### VERANDA HRV08-ZIP



- Fabric stays stretched longer due to innovative ZIP system with metal spring,
- compact box helps to create timeless design,
- possibility to connect up to 4 pcs together (common box up to 6 m width of the blind),
- system variability (fabric can be rolled sideways,
- bottom-top and top-bottom),
- can be mounted from exterior or interior,
- high wind resistance (up to 140 kph).

Control	Width (mm)		Height (mm)	Guaranteed area (m <sup>2</sup> )
	min.	max.	max.	max.
Motor	850	3 000	3 500	10,5
Motor, assembly MT1, MT2	850	4 000	3 500	14



### VERANDA HRV80-ZIP



- Ideal for large glazed areas up to the 25 m<sup>2</sup> size in a single frame,
- less sunlight on vertical glazed areas thanks to an overlap,
- the fabric remains taut thanks to a new ZIP system,
- the compact box helps create a sophisticated appearance of the veranda,
- high wind resistance (up to 140 kph),
- possibility to install LED lighting.

Version	Width (mm)		Height (mm)	Guaranteed area (m <sup>2</sup> )
	min.	max.	max.	max.
motor	1 500	6 000	6 000	25



### VERANDA HRV80-ZIP-2P



- Elegant thanks to simple design,
- completely closed box, ensuring that the fabric colours will remain bright for many years,
- perfectly completes any terrace thanks to the flexible stand positioning,
- the fabric remains taut thanks to the innovative ZIP system,
- the compact box helps create a sophisticated appearance of the veranda,
- possibility to install LED lighting.

Version	Width (mm)		Height (mm)	Guaranteed area (m <sup>2</sup> )
	min.	max.	max.	max.
motor	1 500	6 000	5 000	25



# AWNINGS

Awnings are a combination of practicality and elegance. They represent efficient protection against sunlight and underline the appearance of your home. Thanks to their simple construction and quality design, awnings are often used to shade terraces in family houses, but also in the commercial field. A wide range of quality fabrics offers you a broad selection.

## FEATURES AND ADVANTAGES OF AWNINGS

- Roofing of small and large terraces and verandas,
- wide collection of SATTLER fabrics with a special coating TEXgard
- SUNACRYL fibre and solution dyed acrylic technology guarantees high colour fastness of fabrics,
- optional electrical control and sun/wind sensor,
- maximum extension 3,5 m,
- marquees arms made from special aluminium alloy.

## COLLECTION OF AWNING FABRICS

You can choose from a wide range of colours and patterns from leading European suppliers, the Austrian supplier SATTLER and the Italian supplier GIOVANARDI. Both suppliers are characterized by high-quality materials, their high-water repellency and especially colour stability.

Awning fabrics have a surface treatment that ensures excellent resistance to UV radiation and a long life. The fabrics are non-toxic and thus the manufacturers guarantee that they are health-harmless and environment-friendly.

When choosing a fabric, it is also advisable to think about the fact that the extended awning can affect the colours

in the interior as well. The importance of choosing a shade of fabric is also placed on coordinating with the colours of the architectural and natural elements in the area.

The right choice of material also significantly improves the energy efficiency of the house.

All awning fabrics from our sample book can also be used for Veranda HRV52.



#### JASMINA - AWNING WITHOUT CARRYING PROFILE



- Light horizontal awning.
- structure without carrying profile.
- arms from special aluminium alloy.
- wide range and excellent quality of GIOVANARDI and SATTLER fabrics.

Max. extension (m)	Max. width (m)	Motion angle
3	4,8	20°-75°



#### STELA - AWNING WITH CARRYING PROFILE



- Solid steel profile.
- suitable for shading large areas.
- optional cross arm model.
- wide range and excellent quality of GIOVANARDI and SATTLER fabrics.

Max. extension (m)	Max. width (m)	Motion angle
4 (3,5*)	7	15°-45°

\*for crossed arms and half-cassette



#### EMMA - CASSETTE AWNING



- Cassette providing aesthetic and protective function.
- possible setting of arms from horizontal to vertical inclination.
- easy installation.
- wide range and excellent quality of GIOVANARDI and SATTLER fabrics.

Max. extension (m)	Max. width (m)	Motion angle
3	5	0°-50°



#### OLIVIA - CASSETTE AWNING



- Ideal for a large terrace area thanks to drop 4 metres.
- the option of electric vario valance.
- the possibility of lightning integrated into the bottom profile.
- alternative other optional equipment.
- awnings can be coupled to a total width of 12 metres (2 pcs of awnings).
- wide range and excellent quality of GIOVANARDI and SATTLER fabrics.

Max. extension (m)	Max. width (m)	Motion angle
4	7	10° - 45°



#### DAKOTA - CASSETTE AWNING



- Elegant design with compact and fully closed square box.
- integrated water drainage.
- the possibility of lightning integrated into the bottom profile.
- awnings can be coupled to a total width of 12 metres (2 pcs of awnings).
- wide range and excellent quality of GIOVANARDI and SATTLER fabrics.

Max. extension (m)	Max. width (m)	Motion angle
3,5	7	10° - 35°



# PERGOLA ARTOSI

Self-supporting ARTOSI bioclimatic pergola with innovative and clean design from the development department of ISOTRA. The basic dimensions of the product - width 4,5 m and slide-out/extension up to 7 m - meet the strict requirements for the current user comfort. ARTOSI pergola can be assembled in combination freestanding or anchored to the wall. Due to the proven parameters, the price is a significant competitive advantage.

Aluminum slat can be oriented from 0° to 130°, of course there is a seal and slant of the slats for the controlled drainage of water. Shading components and LED lighting can be integrated into the pergola. The advantage of the ARTOSI pergola is the possibility of dividing the roof into more independent sections, which are individually controlled according to the position of the sun's rays.

## ADVANTAGES AND BENEFITS

- Innovative and trendy design
- Water drainage integrated into pergolas
- Protection against rain and snow
- High wind resistance
- Possibility of integrating screen blinds
- Possibility to couple pergolas















## PERGOLA ARTOSI



- The pergola is produced with high accuracy.
- Possibility to place props up to 1 m outside the corner of the pergola inwards
- Low stand height of the roof profile including slat opening - 25 cm in total
- Possibility of dividing the roof slats into more independent sections, separately controlled
- Clean and elegant design
- Easy assembly / disassembly of the slats and variability of installation
- Angle of slat opening 130°
- The loading capacity of the slats is from 116 kg/m<sup>2</sup> for at at 4 x 6 m dimensions pergolas
- Possibility of a LED strip on the sides of the pergola slide-out
- Possibility of integrating shading technology
- Wind resistance class 6
- Price corresponding to the product parameters
- Our own development

### BASIC COLOR DESIGN

 RAL 9010S white structure	 RAL 9007 silver	 DB 702 pearl light grey
 RAL 9010M white matte	 RAL 9007S silver structure	 DB 703 pearl dark grey
 RAL 9006 light silcer	 7016S anthracite gray structure	 RAL 8014S brown structure
 RAL 9006S light silcer structure	 RAL 7016M anthracite gray matte	 RAL 8014M brown matte

Design	Lenght „L“ (slide-out, mm)		Width „S“ (mm)		Underpass height Dimension H (mm)		Guaranteed area (m <sup>2</sup> )
	min.	max.	min.	max.	min.	max.	
motor	1 440	7 000	1 000	4 500*	500	3 000	31,5

From 6,121 mm slide-out, pergola has 6 props.

It is necessary to split the pergola into min. 2 separate sections (min. 2 pieces of engines) from the extension 5.400 mm.

\* Up to a width of 4 000 mm, the load capacity of the slats is up to 116 kg/m<sup>2</sup>. From a width of 4 000 mm, the load capacity of the slats is up to 90 kg/m<sup>2</sup>.

## Double-sided painting of the slats

- 2 basic colours of the slats RAL 7016 S and RAL DB703 S
- Combination option with RAL 9010 S, RAL 9016 S, RAL 9006 S, RAL 9007 S

If the slat is two-coloured, the colour of the side profiles is the same as the colour of the lower part of the slat.

Upper part	Lower part
7016 S	9010 S
7016 S	9016 S
7016 S	9006 S
7016 S	9007 S
DB703 S	9010 S
DB703 S	9016 S
DB703 S	9006 S
DB703 S	9007 S



# CARPORT ARTOSI

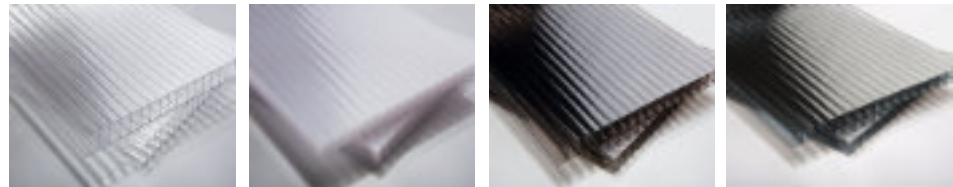
The ARTOSI aluminium CARPORT is a timeless carport with an innovative design, developed with an emphasis on precision, quality of workmanship and the possibility of individual modifications, which will ensure the protection of your car against the adverse effects of the weather. The aluminium construction, which is identical to the construction of the ARTOSI bioclimatic pergola, is complemented with a load-bearing trapezoidal metal plate (standard) or polycarbonate. ARTOSI CARPORT has an integrated water drainage inside the construction without any need for further modifications, with option of LED lighting located around the entire perimeter, controlled by a motion sensor or using IO technology. The carport can also be delivered in a Roofless design (only stands and perimeter frame).

The carport is manufactured with high precision and assembly is therefore easy and fast. You can choose a free-standing or wall-anchored design. We offer ARTOSI CARPORT in twelve basic construction colours identical to the standard colours of the ARTOSI pergola, where the roof can be made of galvanized trapezoidal metal plate or polycarbonate in three colours. The maximum load-bearing capacity is 150 kg/m<sup>2</sup>, we guarantee wind resistance up to 120 km/h and water drainage of 50 l/m<sup>2</sup>h. The standard warranty is 5 years for the construction, 2 years for LED lighting.

ARTOSI CARPORT  
POLYCARBONATE



POLYCARBONATE  
ROOF



clear

opal

bronze

anthracite

ARTOSI CARPORT  
TRAPEZE



Surface finish in RAL 9006 shade on both sides.

TRAPEZOIDAL  
ROOF

NOTE: The shade and surface structure of the paint of the trapezoidal sheet may differ from the shade and surface structure of the paint of the shelter structure and therefore the difference makes no reason for any complaint.



STANDARD COLORS

- RAL 9010S white structure
- RAL 9007 silver
- DB 702 pearl light grey
- RAL 9010M white matte
- RAL 9007S silver structure
- DB 703 pearl dark grey
- RAL 9006 light silcer
- 7016S anthracite gray structure
- RAL 8014S brown structure
- RAL 9006S light silcer structure
- RAL 7016M anthracite gray matte
- RAL 8014M brown matte

Roof version	Length (mm)		Width (mm)		Passing heigh (mm)		Guaranteed surface (m <sup>2</sup> )
	Min.	Max.	Min.	Max.	Min.	Max.	
Polycarbonate	1 440	7 000*	1 000	4 500	500	3 000	31,5
Trapezoidal	1 440	7 000*	1 000	4 500	500	3 000	31,5
Roofless	1 440	7 000*	1 000	4 500	500	3 000	31,5

\*The shelter roof must have 6 poles for lengths above 4500 mm



# ARTOSI GLASS SLIDING GLAZING SYSTEM

We keep innovating the ARTOSI aluminium bioclimatic pergola. In addition to the ALFA and ALFA PLUS screen roller blinds, it is now possible to implement the ARTOSI GLASS sliding glazing system to the pergola sides.

The sliding system consists of aluminium profiles and glazing. The system features slide opening, i.e., the individual wings slide one behind the other. You can order two- to six-wing version of the system.

The system can be equipped with a metallic lockable handle with a cylindrical inlay, safely separating the terrace

and the garden and protecting against burglary. The ARTOSI GLASS sliding system is made from high-quality aluminium profiles and stainless components.

The glass used is safety tempered glass of 10 mm thickness, which allows glazing over areas up to the height of 2.7 metres.

The system may be supplied coated using a complete RAL colour range, with anodised surface treatment. You can therefore fully tone the glazing system with your ARTOSI pergola as well as the ALFA screen roller blind. The system is advantageous thanks to the fast and simple installation and maintenance. All you need to do for smooth running is keeping the lower rail clean. Free access to the wings facilitates easy maintenance of the glass.

Frame glazing system	Width (mm)		Height (mm)		Loading (kg/bm)
	Min.	Max.	Min.	Max.	Max.
One-sided	800	1 000	500	2 700	70
Glazing area	2 000	6 000	500	2 700	70

# SLIDING FRAMELESS GLAZING SYSTEM

## ADVANTAGES

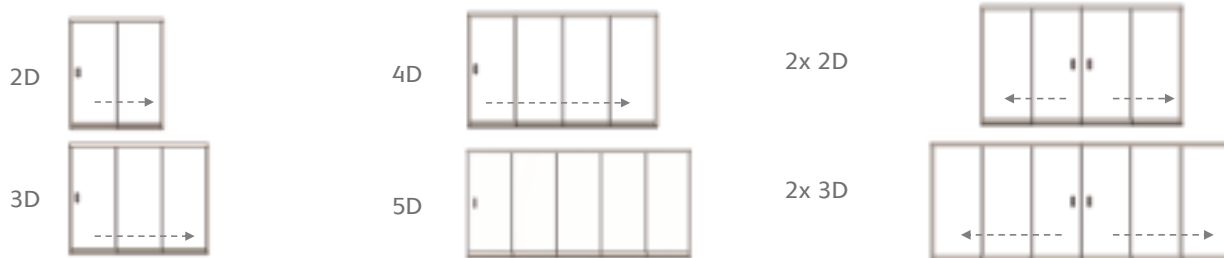
- ensures unobstructed view of the garden
- protects from noise, dust and bad weather
- obstruction against forced entry
- colour matching with the ARTOSI pergola as well as the ALFA screen roller blind
- easy and fast operation and maintenance
- selection of the number of wings and method of opening

## DIMENSIONS AND WEIGHT

- wing width: 50-100 cm, max. height: 270 cm
- max. width of the glazed area: 6 m
- possible combinations: 2D-5D, or 2 x 2D-2 x 3D
- weight: 28 kg/m<sup>2</sup> (in case of glass thickness of 10 mm)
- 70 kg / running metre (in case of glass thickness of 10 mm and glazing height of 2.7 m)

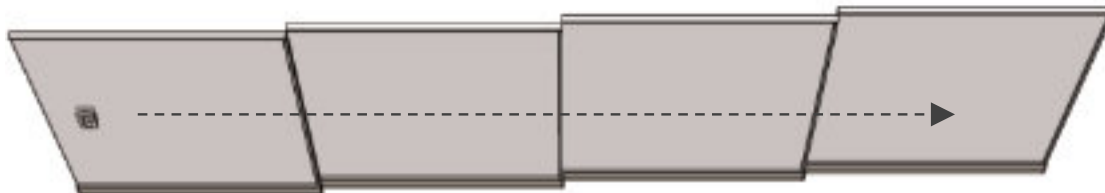
## CONSTRUCTION

### NUMBER OF WINGS



### METHOD OF OPENING

One-sided (opening to the left/right)



Double-sided (curtain type)



Frame glazing is part of ARTOSI SLIDE PANELS.



# ARTOSI SLIDE PANELS

The ARTOSI SLIDE PANELS side walls represent a unique shading solution perfectly convenient to the ARTOSI bioclimatic pergola or the ARTOSI CARPORT. The side walls act as a shading and decorative element at the same time, protecting against adverse weather and noise, thus increasing user comfort and your privacy.

ARTOSI SLIDE PANELS represents a sliding wall system, where the panels run on the lower rail and are guided by the upper rail. Stability is ensured by the lateral guide rails.

The system stands out for its very easy operation and minimal maintenance requirements. The movement/opening can be solved either to one side or centrally as a curtain. A great advantage is the easy installation of the sliding walls, which complements the modular construction of the ARTOSI bioclimatic pergola or ARTOSI CARPORT.

The individual aluminium elements of the sliding panels can be colour-tuned with the ARTOSI pergola or carport, because the offer of standard colours is identical. Any RAL colour can be chosen for painting, and for panels, Decoral technology is also available.

	Width (mm)		Height (mm)	
	min.	max.	min.	max.
One panel	500	1 250	550	2 700*
Shading area	1 000	7 000	550	2 700*

\*In the case of glass filling, the maximum height is 2 500 mm.

## Advantages & benefits:

- luxurious design
- shading and decorative element
- aluminium frame and filling – long service life
- easy operation
- maintenance-free operation
- fast, easy and safe assembly
- high user comfort

## Sliding panel design:

Standard fillings in the following versions

- fixed slat
- bevelled slat
- bevelled rotating slat
- fixed slat with fabric
- panel with fabric
- glass



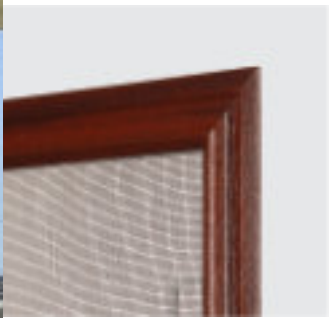


# INSECT SCREENS

For modern windows you can choose easily removable screens, while older windows can be fitted with sprung pins, or swivel, which require drilling the windows. We recommend the roll-up type screen for frequent use and almost invisible storage; this type can be easily concealed on the side of the window. Type H1, H2 is intended for doors (balcony or terrace), which is easily removable. Where there is not sufficient space for any other kind of insect screens, it is advisable to choose pleated insect screen, both for windows and for doors. All models are available in many colours according to the RAL colour sampler.

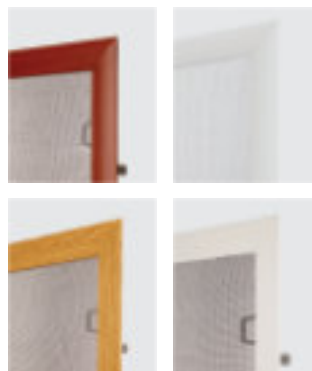
## FEATURES AND ADVANTAGES OF INSECT SCREENS

- Aluminium frame,
- easy installation onto window/door frame,
- variable frame design for respective types,
- frame colours according to RAL colour sampler, wood imitation or renolite,
- option of atypical design for screen types C1 and C2,
- maximum guaranteed area up to 3,6 m<sup>2</sup>,
- Pleated insect screens have low low bottom profile.



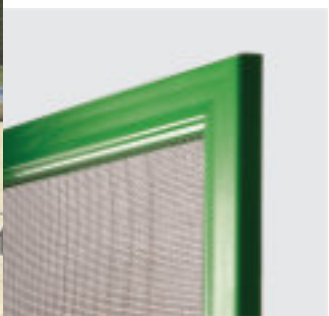
#### TYPE C1, C2, C10, C11, C20

- Aluminium frame,
- installation requires no intervention in the window frame,
- suitable for windows without subsill,
- frame colours according to ral colour sampler, wood imitation or renolite,
- option of atypical design for screen types C1 and C2,
- maximum area: 3,6 m<sup>2</sup>.



#### ROLL-UP TYPE F10, G10

- Possible arbitrary raising and dropping of screen horizontally or vertically,
- extruded aluminium box,
- also suitable for dual-wing windows and balcony doors,
- frame colours according to RAL colour sampler,
- maximum area for F10: 3,6 m<sup>2</sup>,  
maximum area for G10: 3 m<sup>2</sup>.



#### TYPE E

- Aluminium frame,
- suitable for windows with subsill, construction openings and older window types,
- frame colours according to RAL colour sampler or wood imitation,
- maximum area: 3,6 m<sup>2</sup>.



#### DOOR TYPE H1, H2

- Rolled aluminium frame,
- higher frame rigidity,
- self-closing hinges,
- easily removable from balcony doors,
- frame colours according to RAL colour sampler, wood imitation or renolite.



#### PLEATED INSECT SCREENS

##### PS1, PS1 V, PS2, PS2 V, PS3 V, PS4 V

- Low bottom profile (PS1, PS 1V, PS2, PS2 V, PS 3V),
- vertical (PS1, PS1 V, PS2, PS2 V, PS3 V) or horizontal control (PS4 V),
- durable certificate mesh resistant against weather conditions,
- assembly to window opening and to reveal,
- modern design.



# INDOOR AND OUTDOOR SHADING

For your easier orientation in the selection of various types of material, color shades or design options, we are offering you a wide range of samples for indoor and outdoor product.





OWN  
TECHNOLOGIES

# OWN TECHNOLOGIES

ISOTRA has a long-term interest in the technologies of solar radiation shading and its impact on energy savings. Own technologies, elaborate procedures, research and development of shading products rank ISOTRA among the top producers of shading equipment and one of the technological leaders not only in the Czech Republic.

Our production program doesn't focus only on shading equipment, but also includes production of components, profiling lines, shearing tools and technological units for production of blinds. We have our own development department, design office, modern tool shop and production of components.

## MACHINES FOR PRODUCTION OF SHADING PRODUCTS

- Rolling and profiling lines,
- shearing machines,
- complete technological units.



## TOOL SHOP

WE OFFER PIECE AND SERIES PRODUCTION OF

- Injection moulds for plastics,
- cutting and pressing tools,
- single-purpose cutting tools,
- forging tools (dies, forging inserts, cutting pieces),
- special preparations and gauges,
- rolling mills for thin-wall profiles,
- drilling on horizontal drilling machines.

## PRODUCTION OF COMPONENTS

Production of components at ISOTRA includes three basic areas: thermoplastic injection technologies, pressing of sheet metal parts and powder coating. We produce plastic components, plastic pressed parts, sheet metal and aluminium components for our own production, as well as for other producers of shading equipment. We fill available capacities by production for customers from the knitting, electrical and machinery industries.



## POWDER COATING PLANT

ISOTRA company has the most modern powder coating plant in Central Europe in the field of shading technology. On our automatic painting line, we are able to paint products in all conceivable shades, (RAL, RAL design and NCS), structures (coarse structure, fine structure, snakeskin and smooth) and gloss levels. The paint shop equipment includes a decoration station, drying oven, kiln, fully automatic neutralization station, crane tracks, power-free conveyors, paint booths and more.





**ISOTRA a.s.**

Bílavecká 2411/1, 746 01 Opava  
Czech Republic

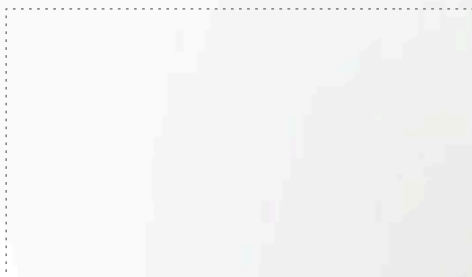
Tel.: **+420 553 685 111**

E-mail: [isotra@isotra.cz](mailto:isotra@isotra.cz)

**[www.isotra.com](http://www.isotra.com)**

Issue: 05/2026

**ISOTRA Partner:**



*... protect your privacy.*